



MONTHLY MEMBERSHIP PROGRESS REPORT

District 13 OH2

Results as of: 06/30/2018

GMT: CINDY GREGG

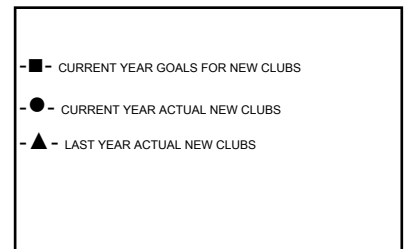
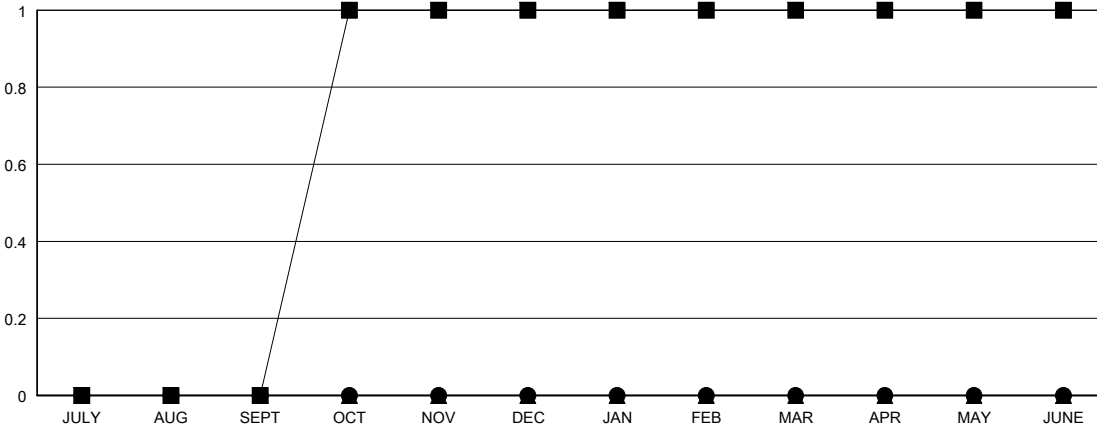
LOCATION OHIO

GMT CA

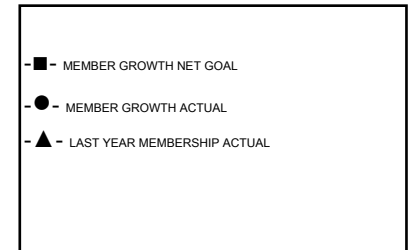
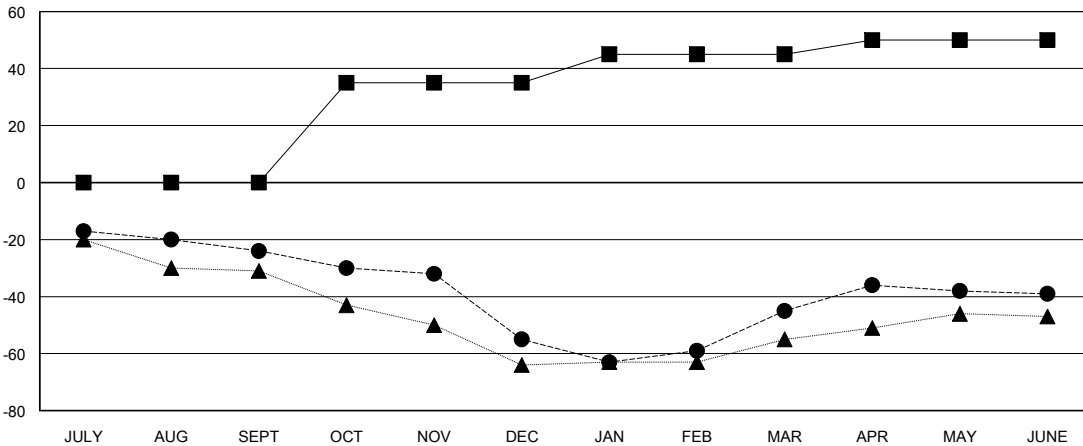
Clubs			
RESULTS FOR 2017-2018			
QUARTER	NEW CLUB GOAL	NEW CLUBS	DROPPED CLUBS
JULY/AUG/SEPT	0	0	0
OCT/NOV/DEC	1	0	0
JAN/FEB/MAR	0	0	1
APR/MAY/JUNE	0	0	0

Members			
RESULTS FOR 2017-2018			
QUARTER	MEMBER GROWTH NET GOAL	MEMBER GROWTH ACTUAL	DROPPED MEMBERS ACTUAL (including transfers)
JULY/AUG/SEPT	0	19	41
OCT/NOV/DEC	35	33	62
JAN/FEB/MAR	10	47	37
APR/MAY/JUNE	5	49	39

GOALS AND ACTUAL NEW CLUBS CUMULATIVE



GOALS AND ACTUAL MEMBERS CUMULATIVE



DROPPED CLUBS: 1

41 CLUBS OF 55 ADDED 1 OR MORE NEW MEMBERS

GENDER DISTRIBUTION	
MALE	1,337 (73.79%)
FEMALE	475 (26.21%)
Women Percentage Fiscal Year Goal: 25%	

DROPPED MEMBERS	
DECEASED	32
CLUB CANCELLED	0
OTHER	147
TOTAL	179

[CLICK HERE FOR CUMULATIVE MEMBERSHIP DATA](#)

TOTAL FAMILY UNIT MEMBERS	0
FAMILY MEMBERS PAYING HALF DUES	0